



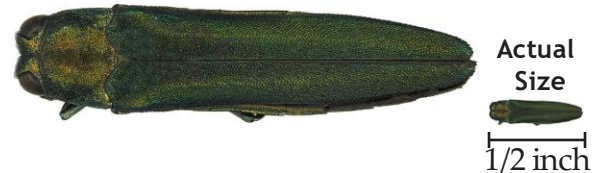
**OREGON
DEPARTMENT OF
AGRICULTURE**

INSECT PEST ALERT TEMPORARY QUARANTINE

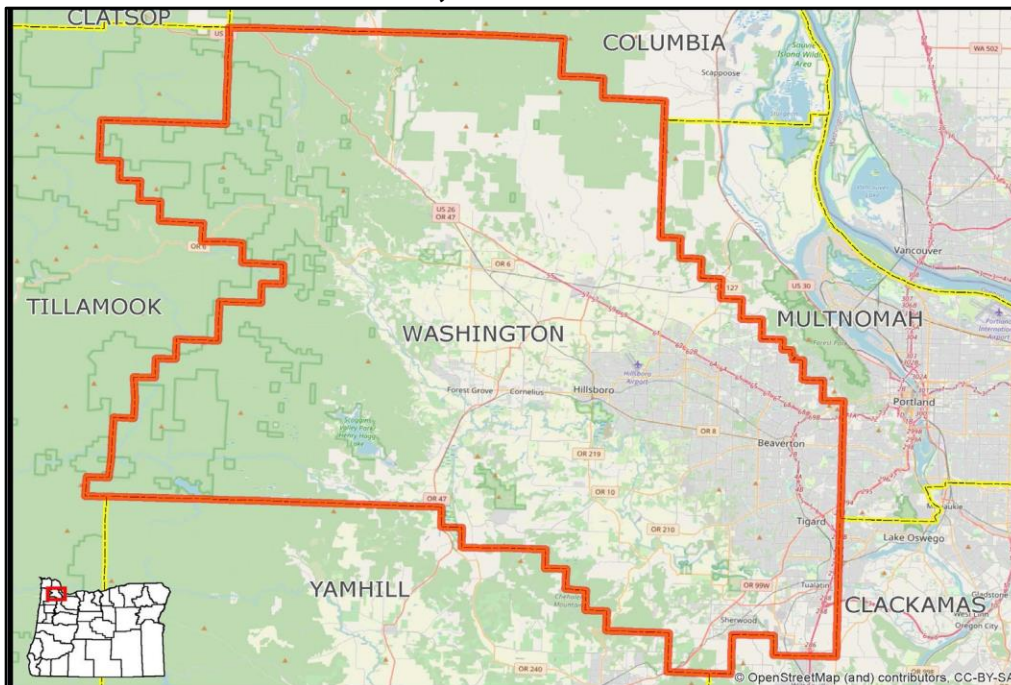


A temporary quarantine is now in effect. Tree materials of ash and white fringe tree, must remain within Washington County. Wood waste must be processed accordingly and disposed of to slow the spread of **emerald ash borer (EAB)** in Oregon.

EMERALD ASH BORER TEMPORARY QUARANTINE



WASHINGTON COUNTY, OREGON



Regulated ash & white fringe tree materials requiring a compliance agreement to move out of Washington County:

- Logs
- Stumps
- Green lumber
- Nursery stock
- Scion wood
- Root stock
- Chips and mulch
- Roots and branches
- Firewood of any hardwood species

Regulation Exceptions

- Seeds and leaves
- Finished wood products without bark, including furniture, baskets, and baseball bats.

Washington County, Oregon is now a temporary quarantine due to the presence of EAB, a destructive pest that targets ash and white fringe trees. The quarantine applies to all of Washington County, including federal, state, commercial, and private lands.

Treatments for ash & white fringe tree materials

- Debark wood and remove at least 1 inch of underlying wood.
- Grind or chip to 1 inch or less.
- Heat wood to a minimum of 170°F for at least 60 minutes.
- Bury under at least 12 inches of topsoil.
- Incinerate wood materials
- Secondary processing to produce wood by-products such as paper, fiber board, wood pellets, etc.

May 1 - October 15

Avoid removing ash and white fringe trees, including branches and stumps.

October 16 - April 30

Conduct tree removal and pruning during this time period. Transport trees and parts of trees to a facility where it will be processed before May 1st.

For more information please visit www.OregonEAB.com

To subscribe to the EAB email list visit ODA.FYI@subscribe

For questions please email us at EAB@oda.oregon.gov or call 503-986-4636

Oregon Department of Agriculture • 635 Capitol St NE, Salem, OR 97301 • 1-800-525-0137



EMERALD ASH BORER (EAB) TEMPORARY QUARANTINE



**OREGON
DEPARTMENT OF
AGRICULTURE**

EAB Control Area Frequently Asked Questions.

Provided by Oregon Department of Agriculture (ODA), Insect Pest Prevention & Management program.

• What tree materials are restricted from leaving Washington county?

Any material that could transfer a beetle egg, larva, pupa or adult. The temporary EAB quarantine includes, but is not limited to, logs, green lumber, nursery stock, scion wood and root stock; chips and mulch, either composted or not; stumps, roots, branches, and firewood from trees other than conifers.

• Why are we concerned with the movement of yard debris out of Washington county?

ODA has only detected EAB in Washington County. To slow the spread of EAB, ODA is creating a temporary quarantine in Washington County to restrict the movement of tree materials that may spread EAB to new areas in the state.

• What is a quarantine? What are the consequences for not adhering to the regulations?

A quarantine is the legal enforcement of actions that help slow the spread of pests to new areas or that prevent them from multiplying where they have already gained entry. ODA has implemented a temporary EAB quarantine as per Oregon Administrative Rule (OAR 603-052-1070). Non-compliance will result in the spread of EAB and civil penalties of up to \$10,000 as provided by ORS 570.995

• I live just outside of the quarantine. Should I take my tree materials to a special place?

No. If trees on or around your property are showing symptoms or signs of EAB infestation please call 1-866-INVADER or contact ODA at: EAB@oda.oregon.gov

Ash Tree ID

- Compound leaves with 5-11 leaflets
- Unstaggered opposite branching
- Diamond shape bark pattern
- Seeds are oar-shaped samaras



Oregon Ash leaf
Photo: Jordon Bartosz

Signs & Symptoms of EAB

- Crown dieback in heavily infested trees
- D-shaped emergence holes in bark about 1/8 inch (3mm) in size.
- Sucker shoots emerging from trunk
- S-shaped galleries underneath the bark
- Bark splitting found on trunk or branches
- Woodpecker activity
- The tree is dying from top down



D-shaped emergence hole



Bark splitting



S-shaped galleries

Processing and Disposal Resources

For a list of businesses that can aid in removing, processing, and disposing of regulated wood materials, please visit: ODA.direct/EAB

For more information please visit www.OregonEAB.com

To subscribe to the EAB email list visit ODA.FYI/subscribe

For questions please email us at EAB@oda.oregon.gov or call 503-986-4636

Oregon Department of Agriculture • 635 Capitol St NE, Salem, OR 97301 • 1-800-525-0137

